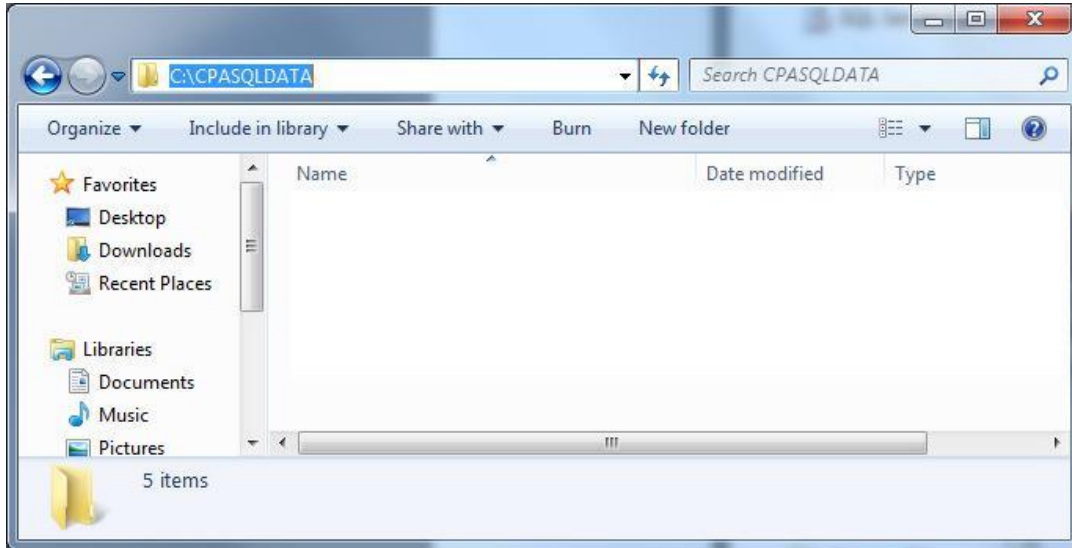
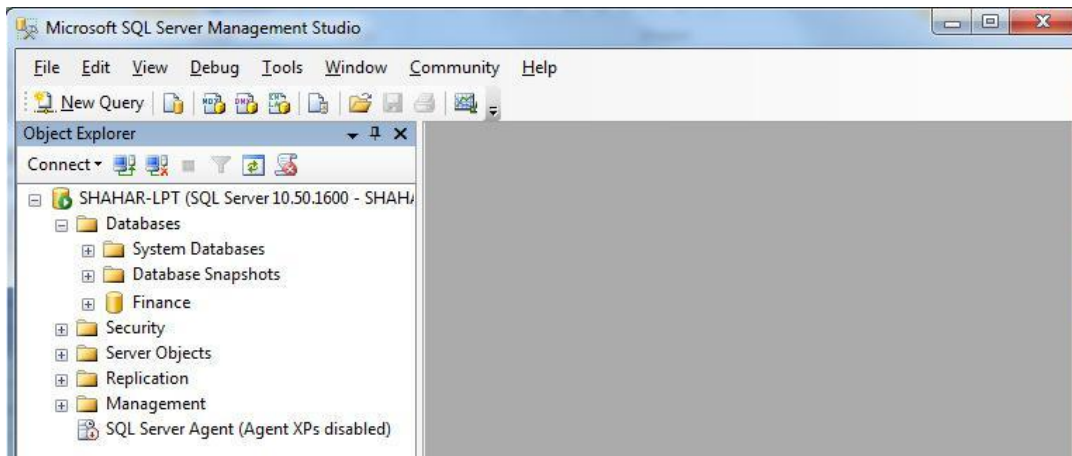


Same database partitions Restore

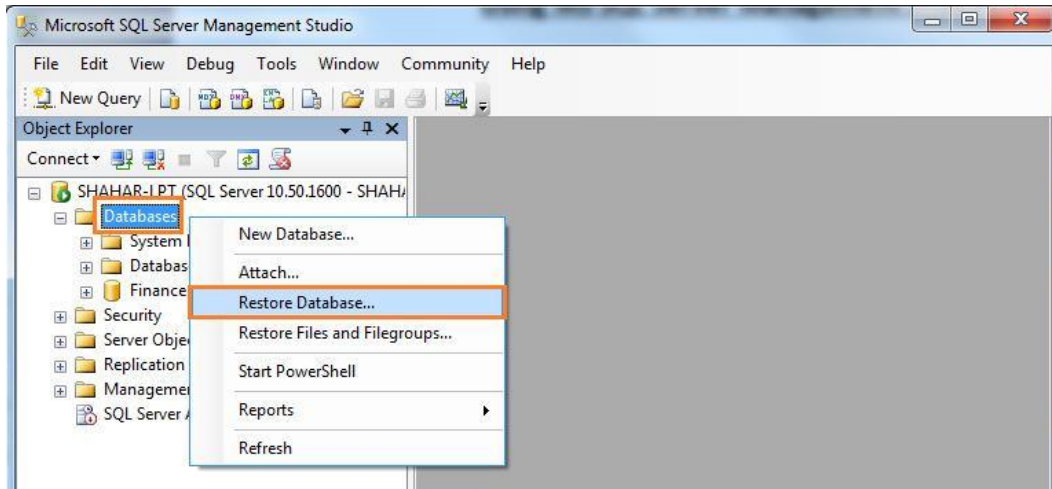
1. Create the same folder name on the same path in which the old database files (*.mdf, *.ldf, *.ndf) were located.



2. Open the MS SQL Server Management Studio.

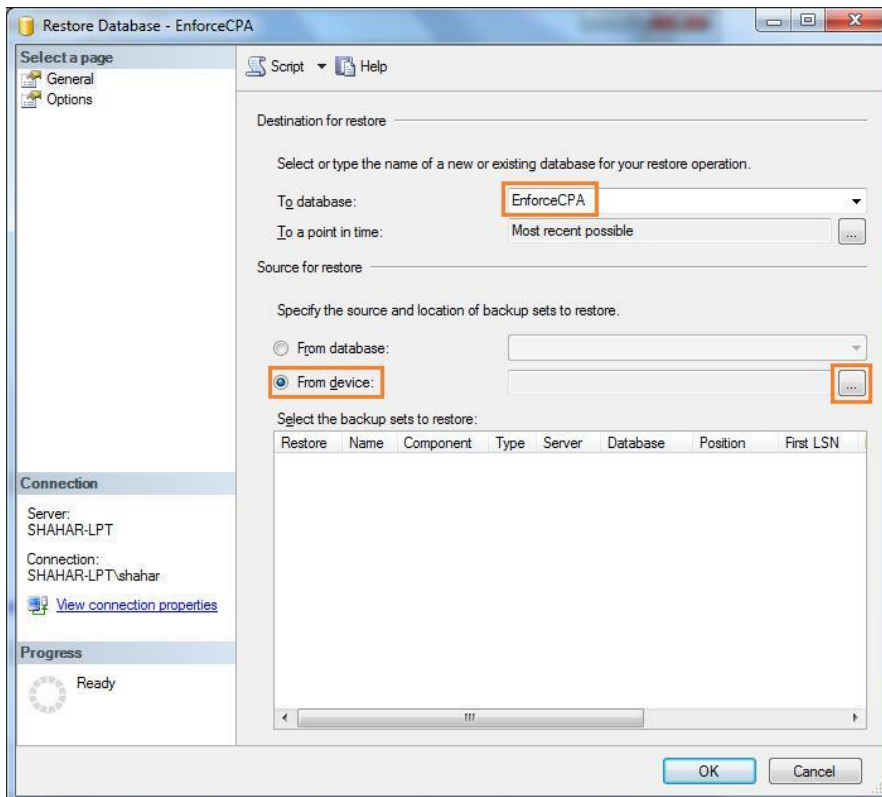


3. Choose Databases. Right click > Restore Database...

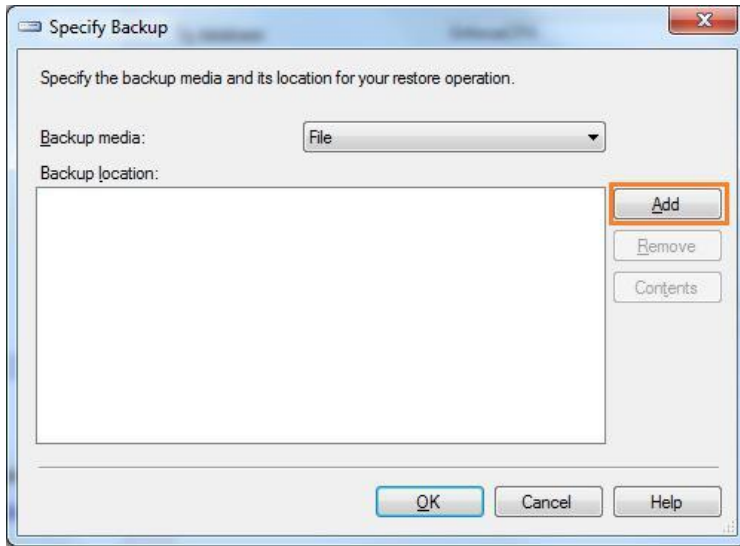


4. The next window will appear. On the parameter of "To database:" you should enter the same name of CPA Database as it was called before.

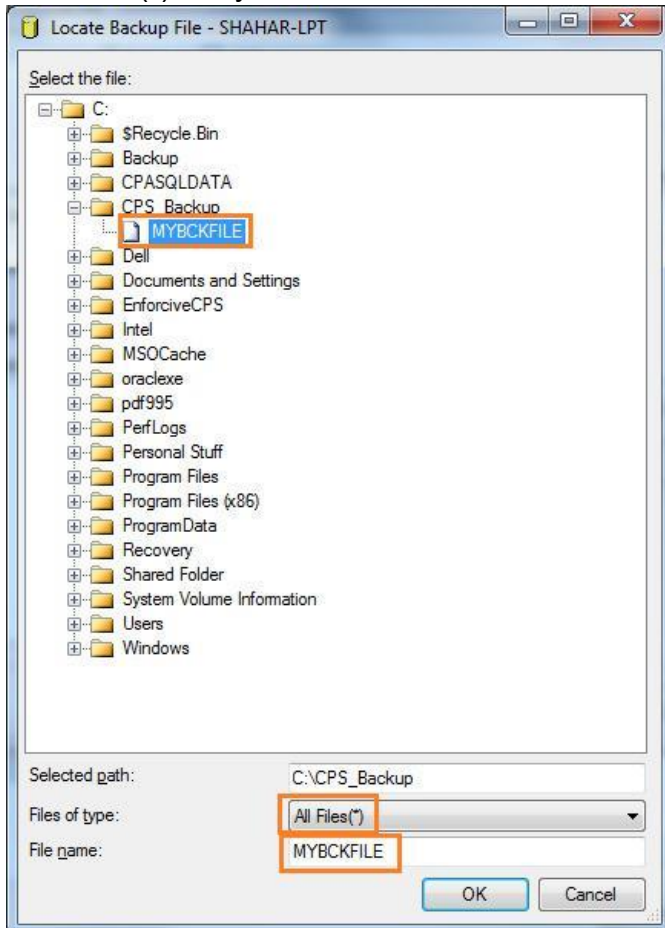
5. Choose the option of "From device" and click .



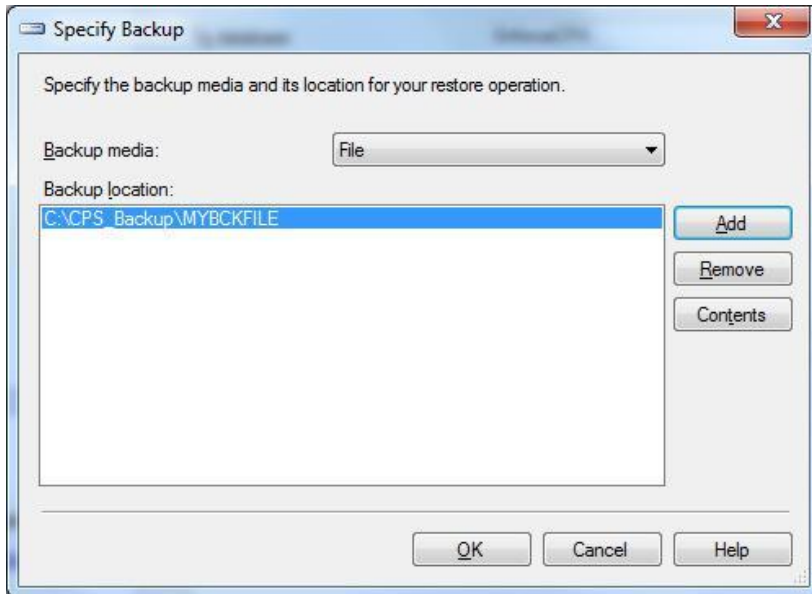
6. The next window will appear. Click “Add” to proceed.



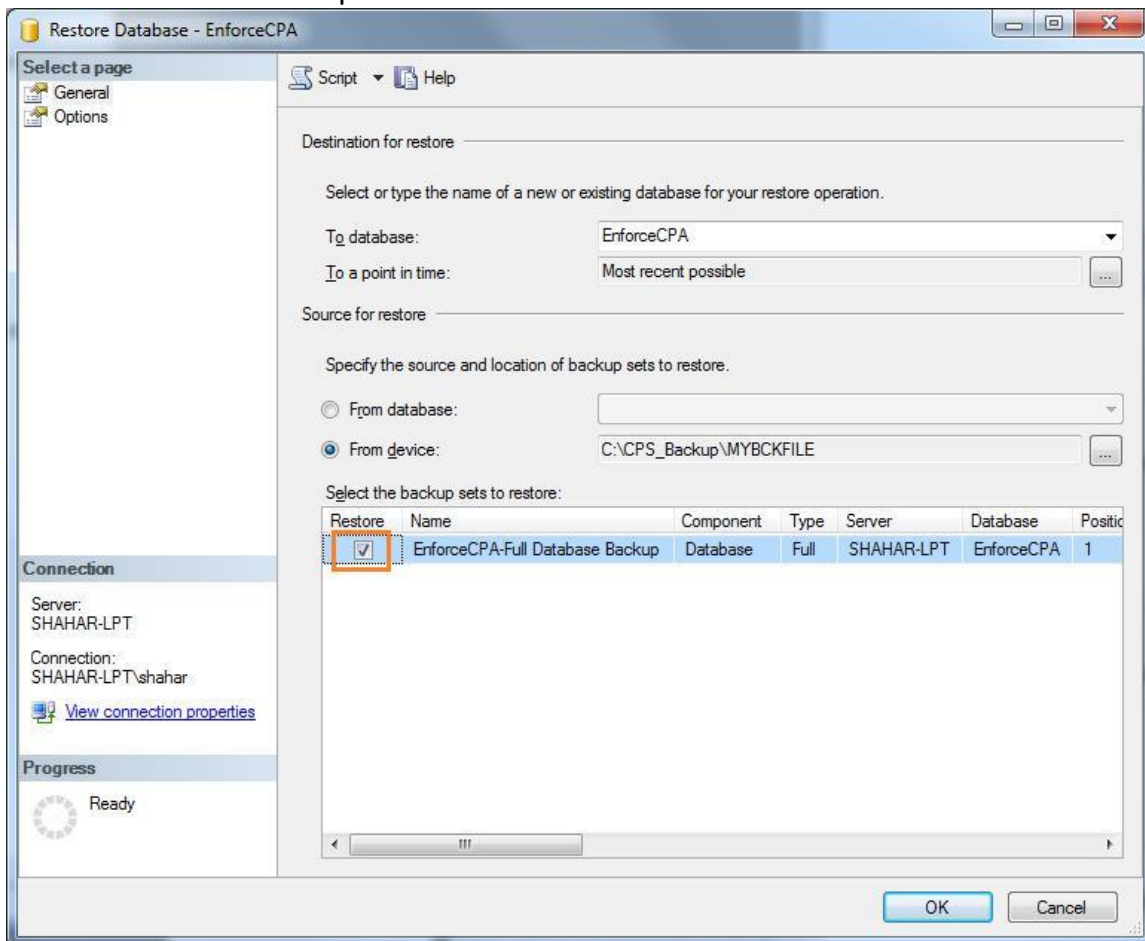
Choose the backup file which is located under the folder that you previously created during the backup process. Change the parameter of “File of type:” to “All Files (*)” so you will be able to see all the files.



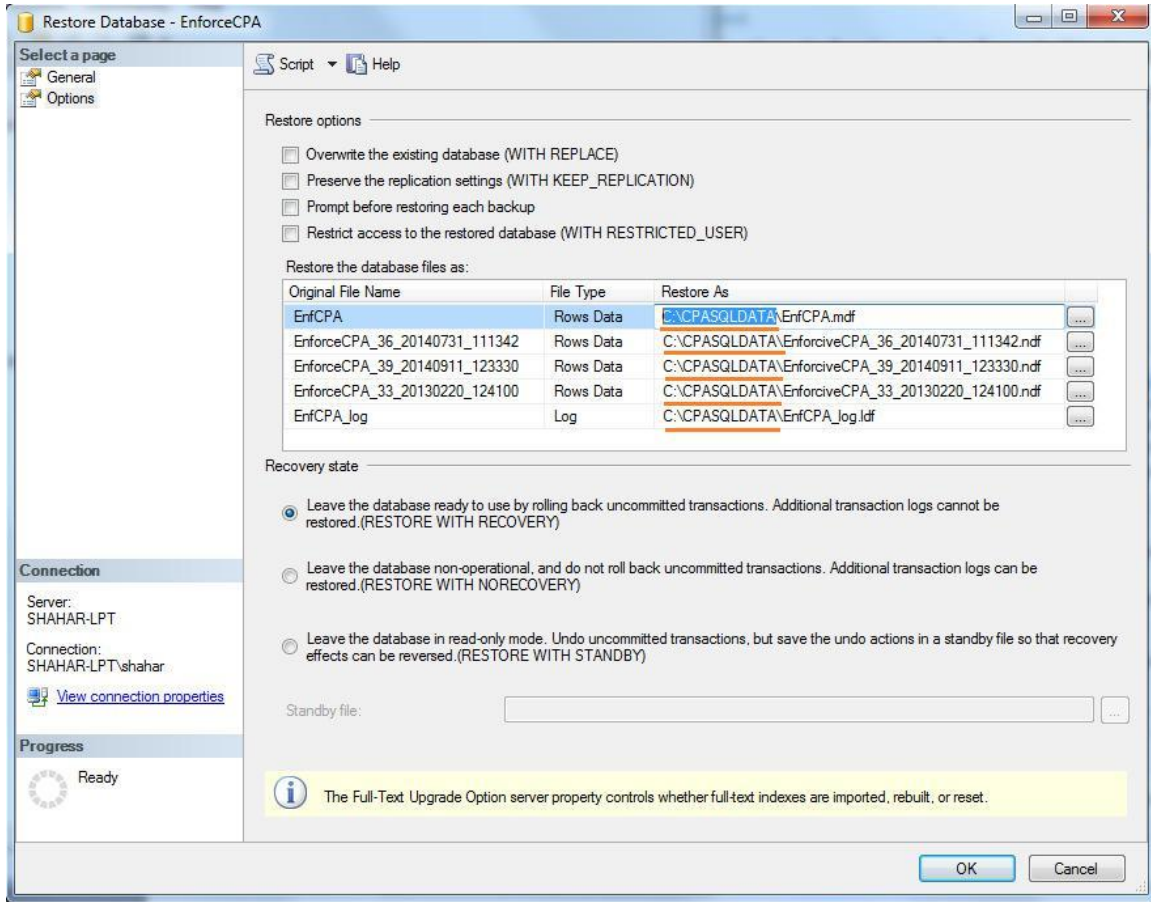
7. Click OK to proceed.



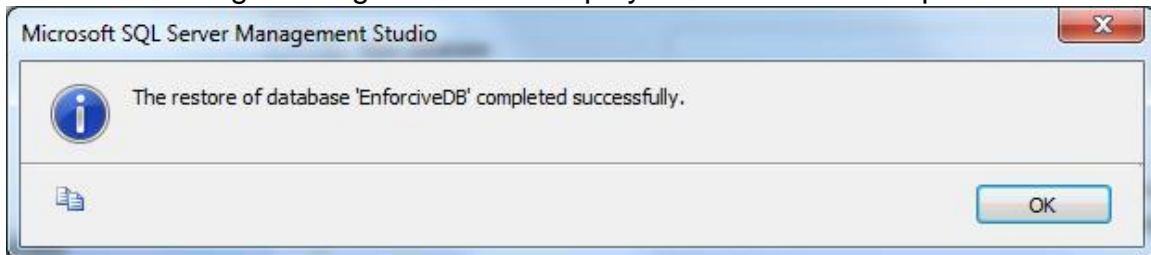
8. Check the backup file.



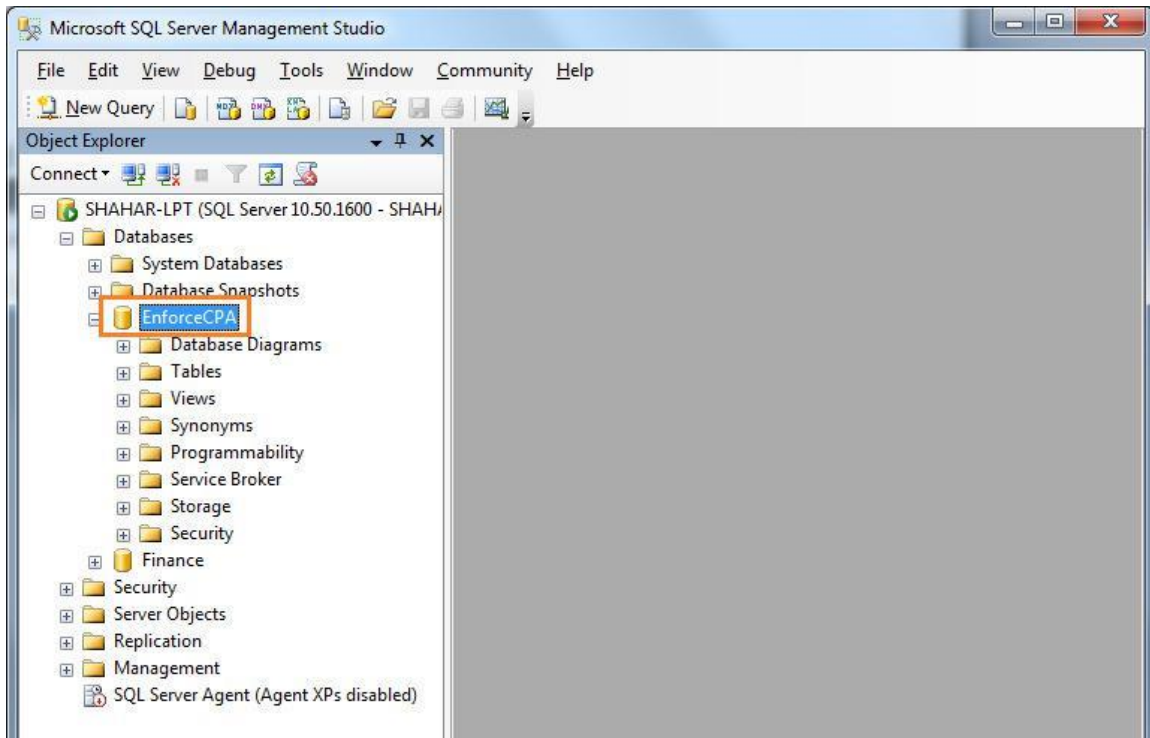
9. Click “Options”. Change the default path of each file by entering the name of the folder which you have previously created at stage 1. Do not change the name of the file or its extension.



10. The following message should be displayed after the restore process.



11. The new CPA Database will be located under Databases.



12. The restored files will be located under the new folder.

