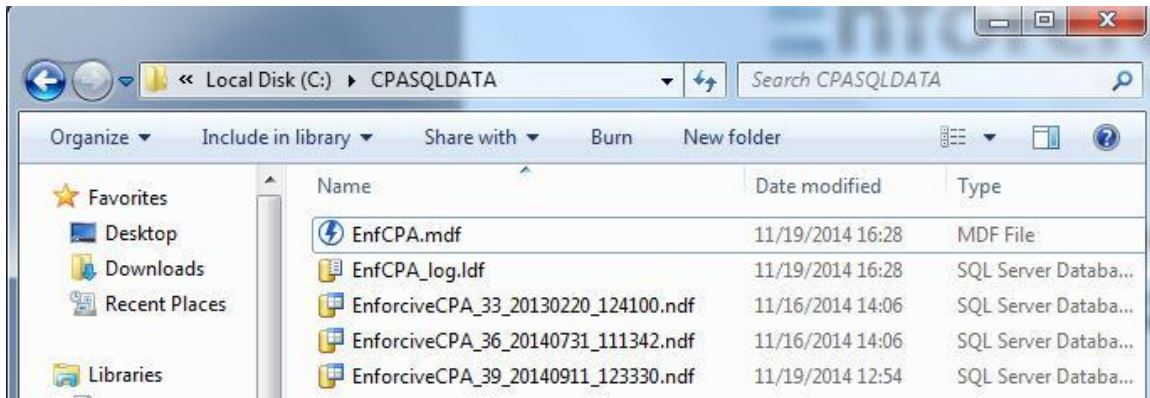
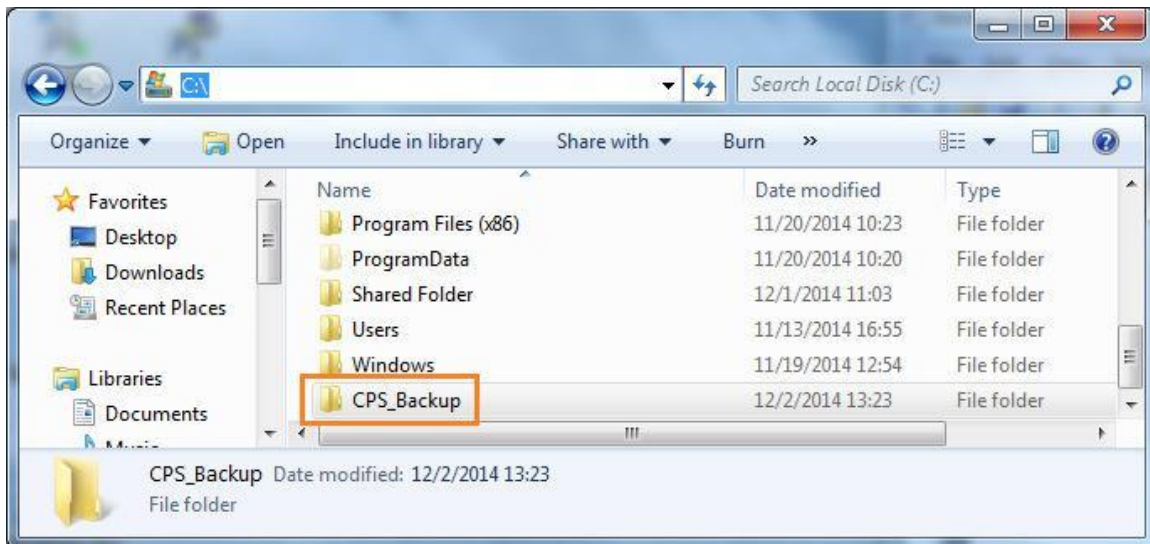


## Same database partitions Backup

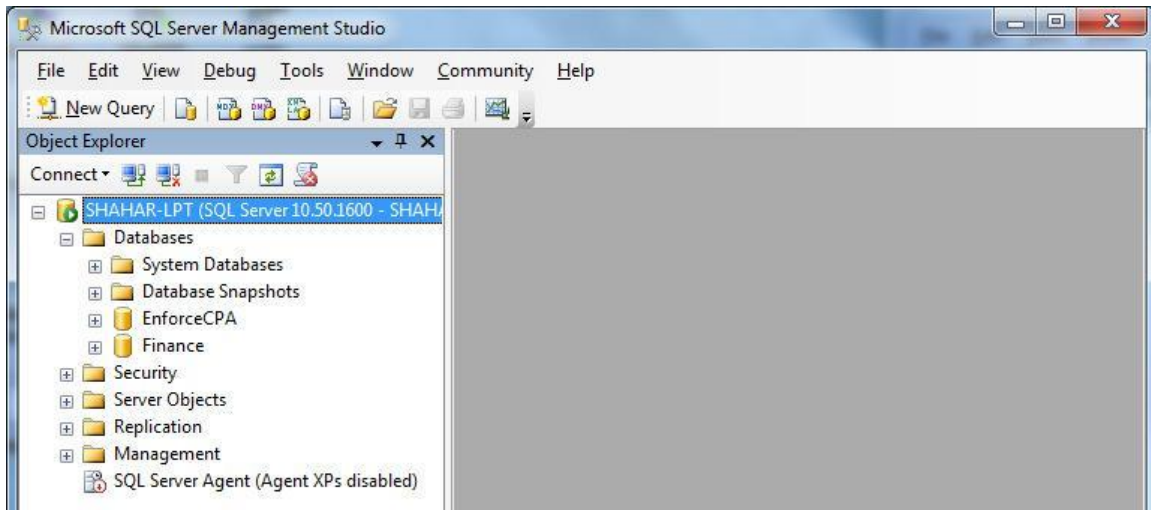
1. In general, the CPA Database includes 3 different files:
  - \*.mdf - is the primary database file
  - \*.ldf - is the transaction log data file
  - \*.ndf - are the secondary database files (rollover partitions files)



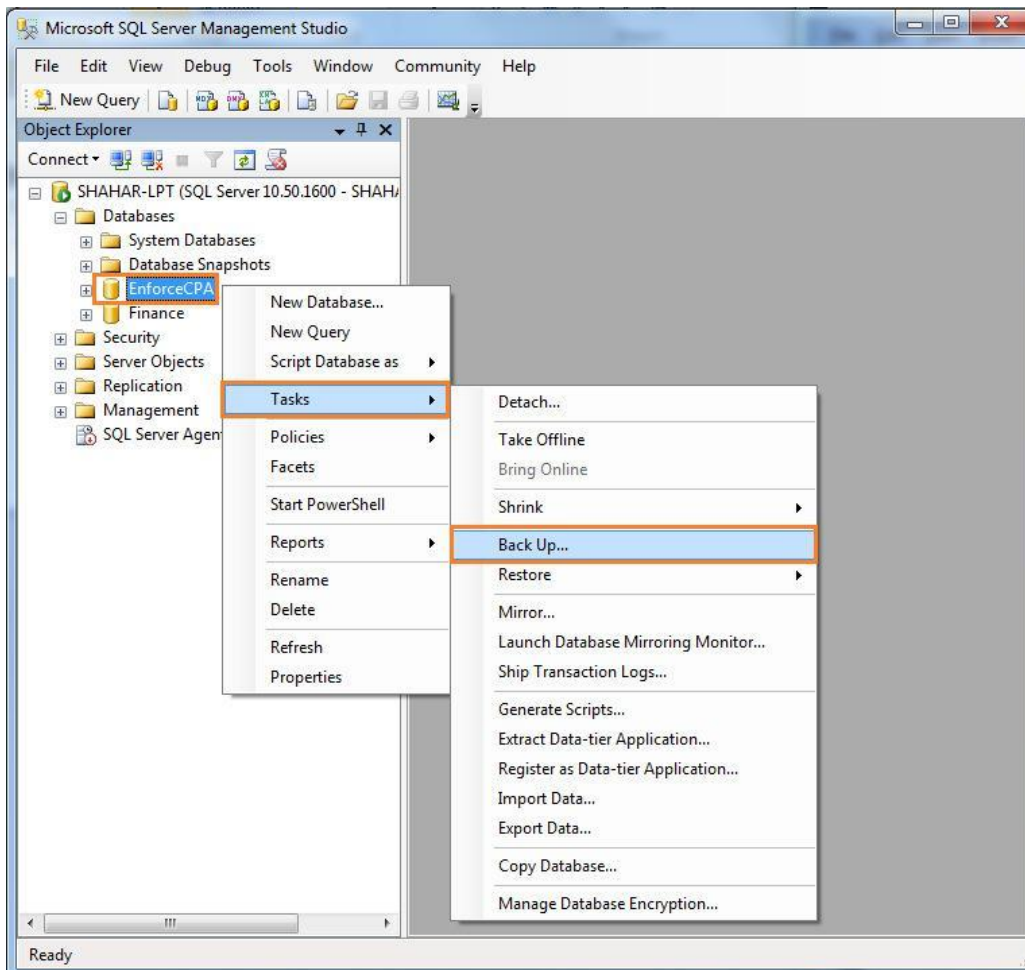
2. Create a local folder to store the backup file.



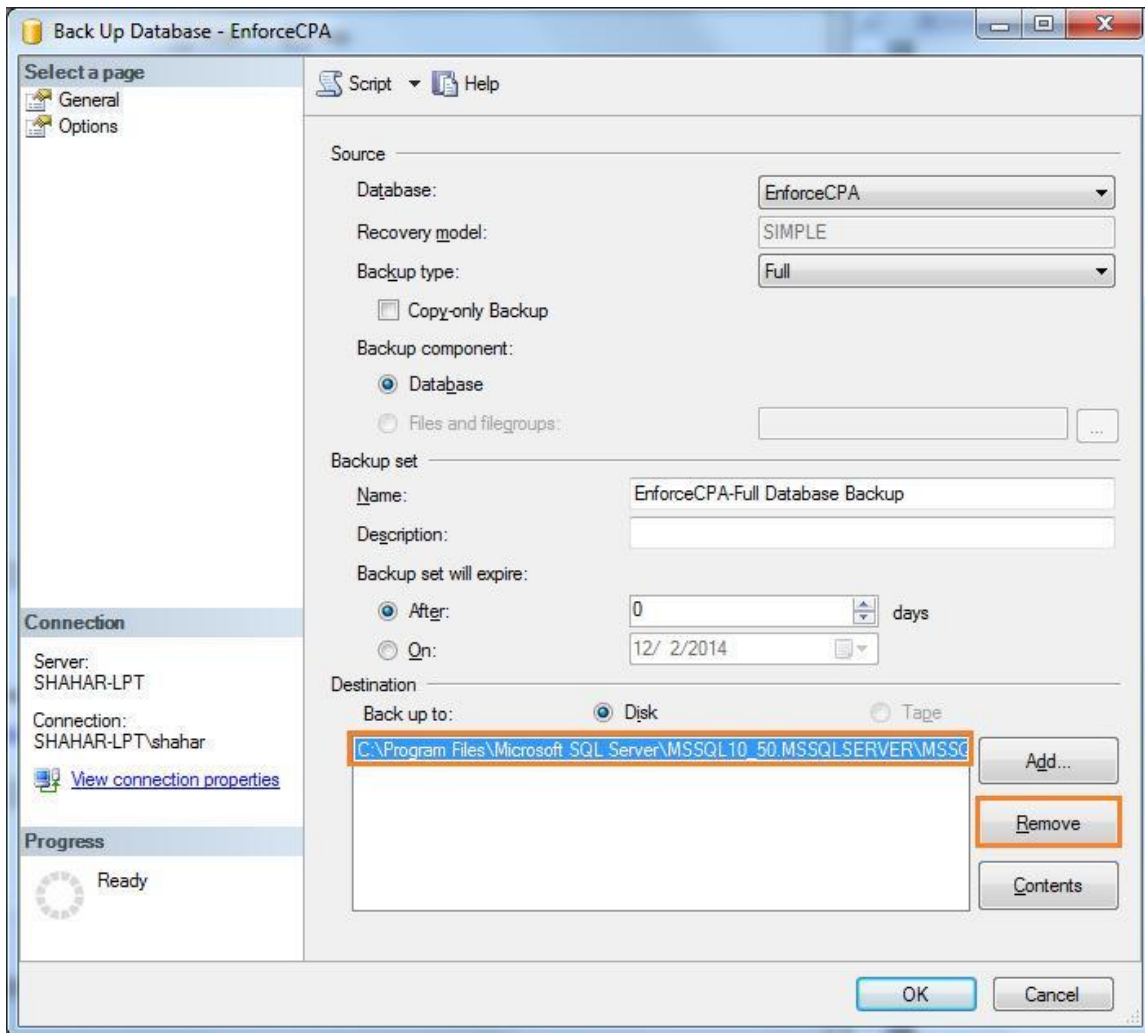
3. Open the MS SQL Server Management Studio.



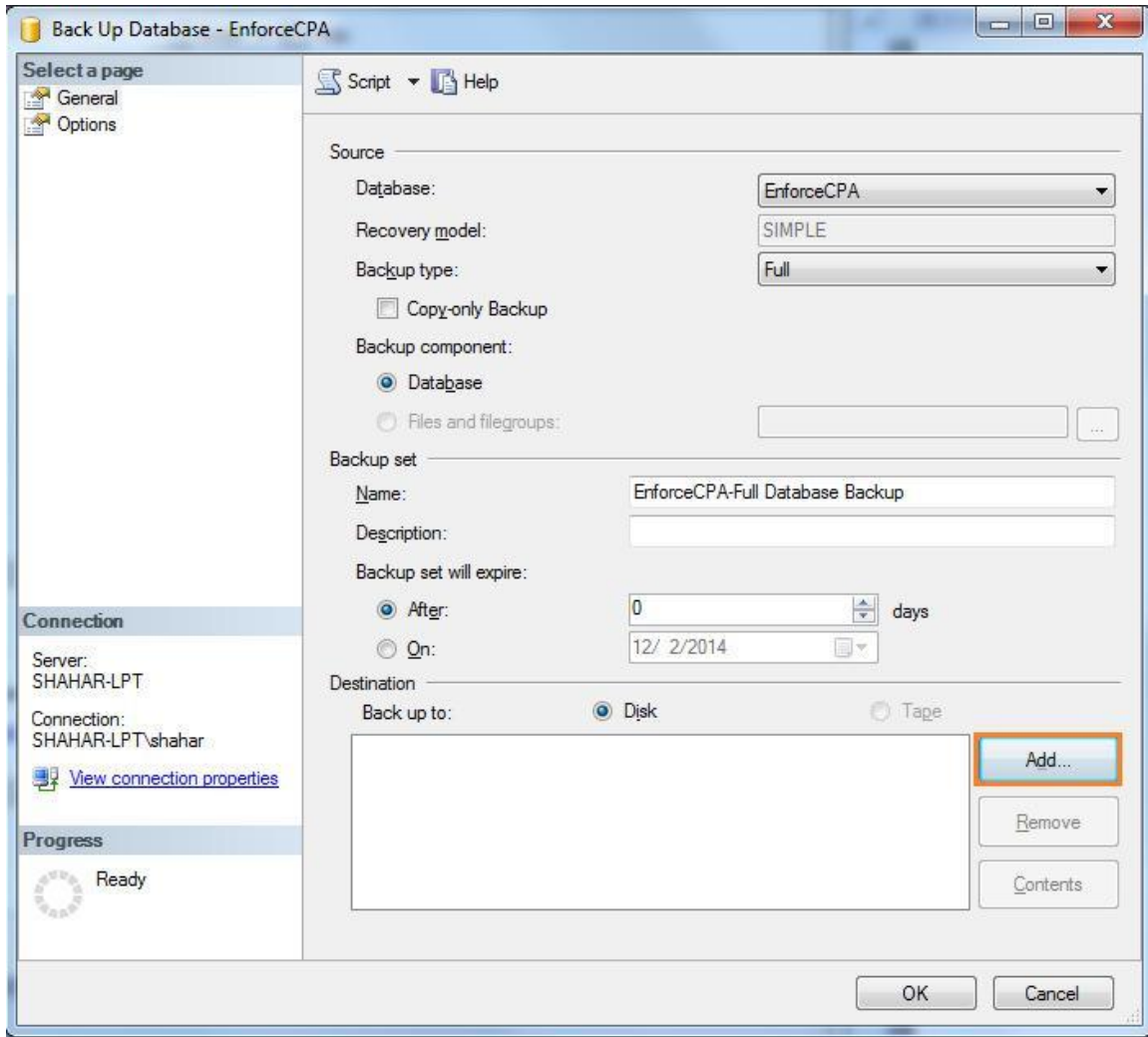
4. Choose the appropriate SQL Database. Right click > Tasks > Back Up...




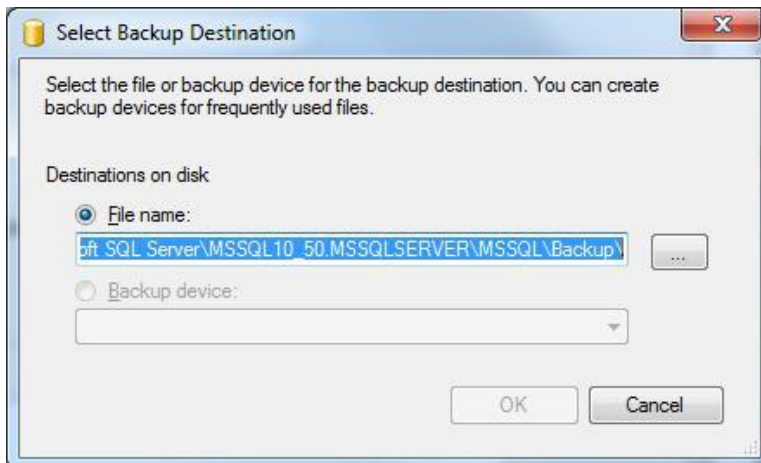
5. The next window will appear. Remove the default destination by choosing the first line under Destination and click Remove.



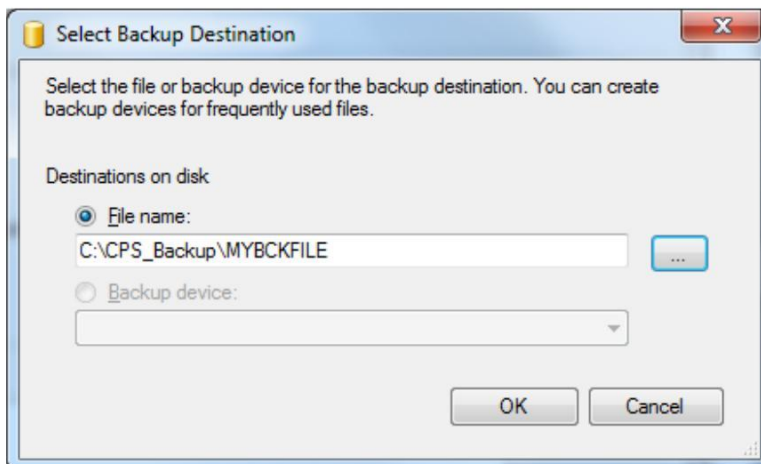
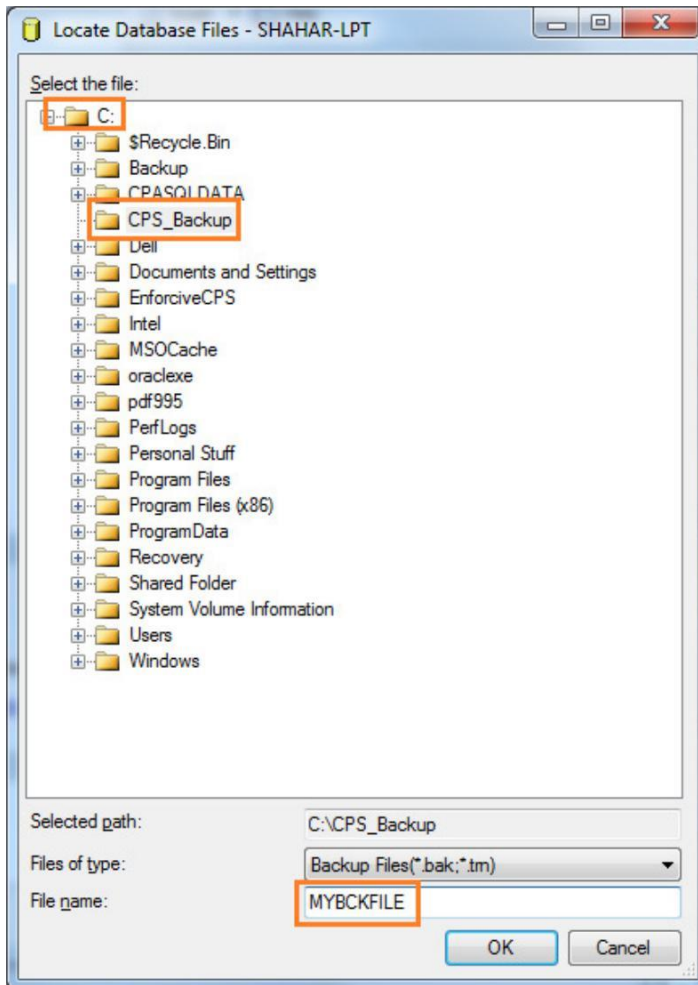
6. After the default destination is deleted, press Add to define a different folder.



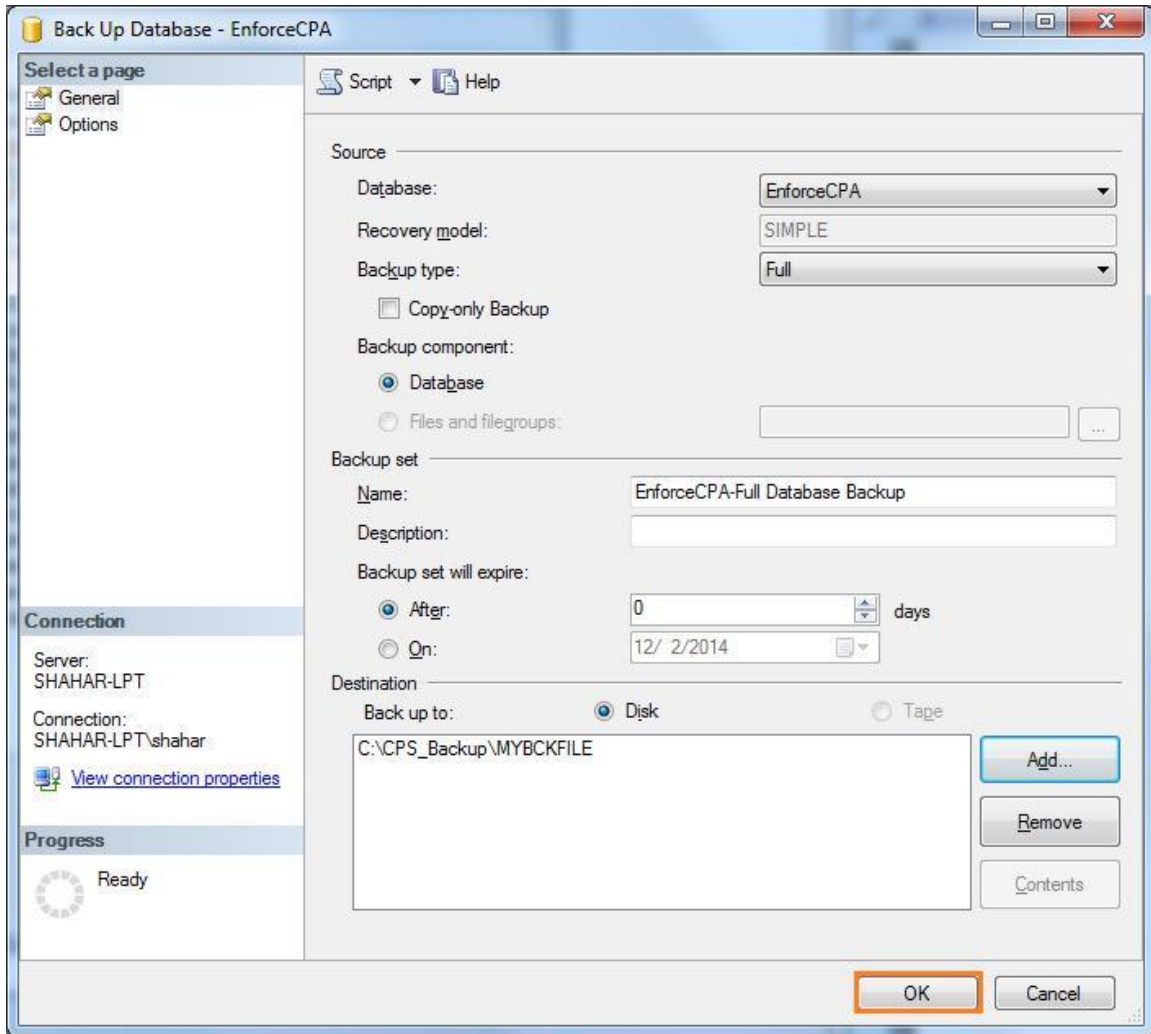
7. The next window will appear. Click  to select a new path.



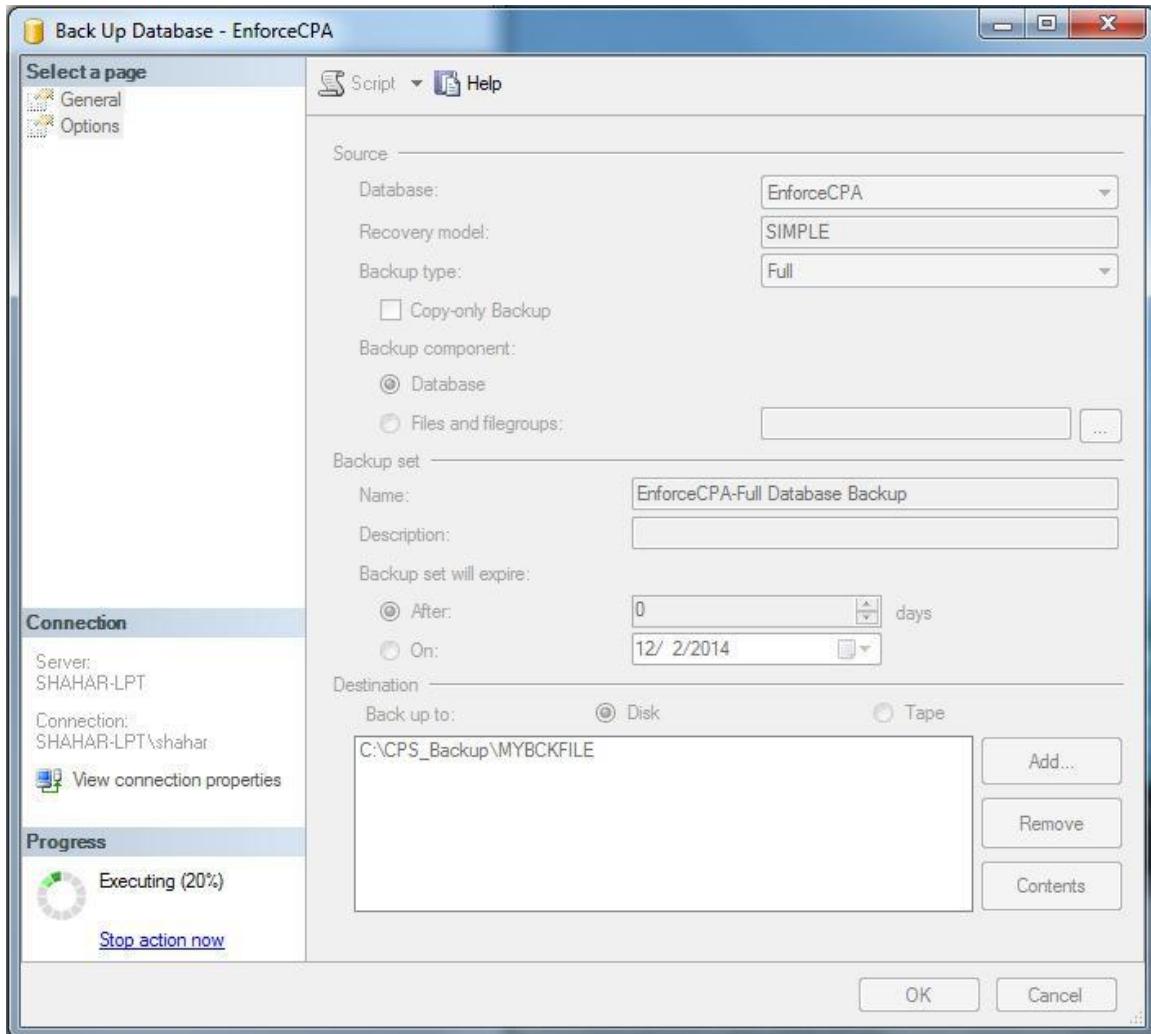
Choose the folder which was previously created in step 2. Enter any file name and click OK to proceed.



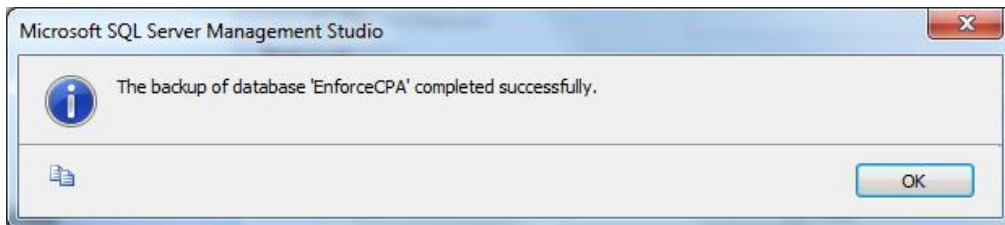
8. Click OK to confirm and start the process.



9. Please wait. The backup process might take some time to complete.



10. The following message will be displayed on completion.



11. The backup file will be located under the folder which you have previously defined.



12. The single backup file of SQL Server which you have just created includes all mdf file, ldf file and ndf files (see step 1).